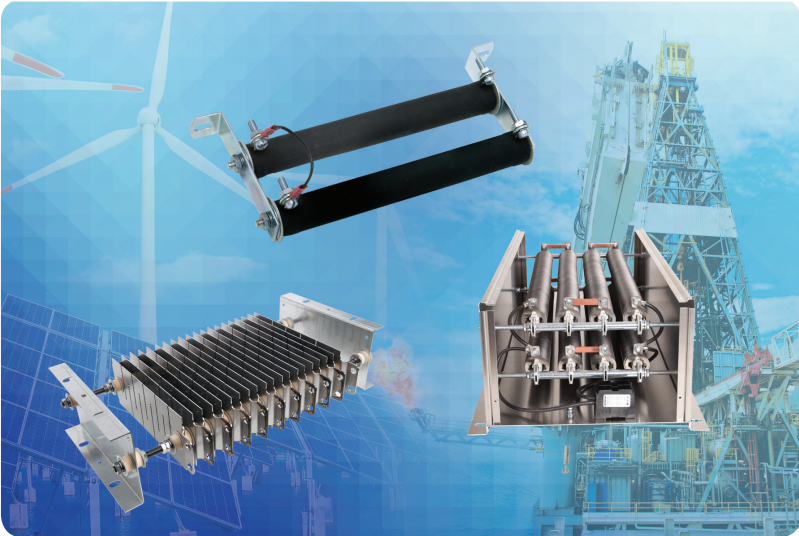




# CUSTOM RESISTOR SOLUTIONS

## Vishay Milwaukee

### Milwaukee Resistor is Now Vishay Milwaukee



#### INTRODUCTION

Vishay Milwaukee, originally founded as Milwaukee Resistor, has been designing and manufacturing a wide variety of standard and custom power resistors since 1944. For over 60 years our commitment to customer service, excellent quality, short lead times, and on-time delivery has allowed us to remain a leader in the highly competitive resistor market. Contact us now to experience the design flexibility and manufacturing superiority that Milwaukee Resistor is known for!

Vishay Milwaukee manufactures standard power resistor solutions from 8 W to 6.5 kW and custom load bank assemblies beyond 100 kW for use in many industries, including:

- Commercial laundries
- Construction and mining
- Factory automation
- Fitness equipment
- Harmonic filters
- HVAC
- Medical imaging
- Oil and gas
- Power generation
- Renewable energy
- Transit
- Welding

#### Contact Us Directly



1-800-274-4284



[sales@chtechnology.com](mailto:sales@chtechnology.com)



6121 Baker Rd. Suite 108  
Minnetonka, MN 55345

One of the World's Largest Manufacturers of  
**Discrete Semiconductors and Passive Components**



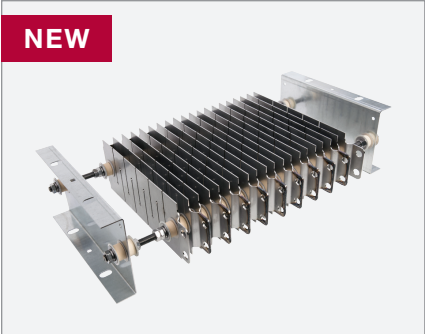


# CUSTOM RESISTOR SOLUTIONS

## Vishay Milwaukee

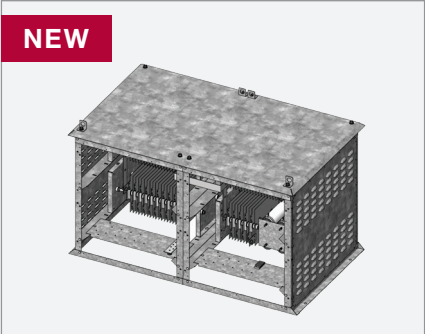
### High-Power Resistors

#### GRE1 Series



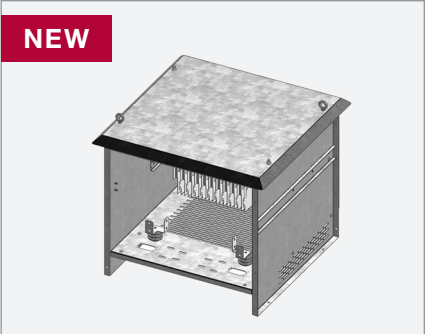
Power (W): 1 to 6.5  
Resistance ( $\Omega$ ): 0.10 to 24  
GRE1 datasheet:  
[www.vishay.com/doc?31833](http://www.vishay.com/doc?31833)

#### GRES Series



Power (W): 6.5 to 500 kW  
GRES datasheet:  
[www.vishay.com/doc?31833](http://www.vishay.com/doc?31833)

#### NGR Series



System voltage (kV): 2.4 to 13.8  
Current (A): 100 to 1000  
NGR datasheet:  
[www.vishay.com/doc?31873](http://www.vishay.com/doc?31873)

#### EDGU Series



Power (W): 400 to 1600  
Resistance ( $\Omega$ ): 0.053 to 5.44  
EDGU datasheet: [www.vishay.com/doc?31855](http://www.vishay.com/doc?31855)

#### EDGS Series



Power (W): 400 to 1600  
Resistance ( $\Omega$ ): 0.053 to 5.44  
EDGS datasheet: [www.vishay.com/doc?31863](http://www.vishay.com/doc?31863)

### Contact Us Directly



1-800-274-4284



[sales@chtechnology.com](mailto:sales@chtechnology.com)



6121 Baker Rd. Suite 108  
Minnetonka, MN 55424



# CUSTOM RESISTOR SOLUTIONS

## Vishay Milwaukee

### Standard Resistors

#### RB Series



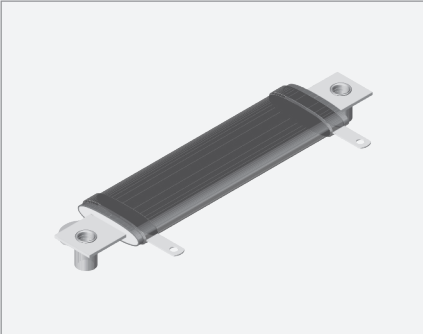
Power (W): 40 to 2000  
Resistance ( $\Omega$ ): 0.01 to 391  
RB datasheet:  
[www.vishay.com/doc?31807](http://www.vishay.com/doc?31807)

#### RD Series



Power (W): 8 to 1150  
Resistance ( $\Omega$ ): 0.06 to 227 K  
RD datasheet:  
[www.vishay.com/doc?31829](http://www.vishay.com/doc?31829)

#### Huntington FSOT Series



Power (W): 30 to 95  
Resistance ( $\Omega$ ): 0.1 to 99.9 K  
FSOT datasheet:  
[www.vishay.com/doc?31847](http://www.vishay.com/doc?31847)

#### Huntington CMS Series



Power (W): 16 to 22  
Resistance ( $\Omega$ ): 1 to 105 K  
CMS datasheet:  
[www.vishay.com/doc?31843](http://www.vishay.com/doc?31843)

#### MCR Series



Power (W): 45 to 125  
Resistance ( $\Omega$ ): 0.2 to 76 K  
MCR datasheet:  
[www.vishay.com/doc?31835](http://www.vishay.com/doc?31835)

#### Huntington FS Series



Power (W): 3 to 20  
Resistance ( $\Omega$ ): 0.1 to 95 K  
FS datasheet:  
[www.vishay.com/doc?31845](http://www.vishay.com/doc?31845)

### Contact Us Directly



1-800-274-4284



[sales@chtechnology.com](mailto:sales@chtechnology.com)



6121 Baker Rd. Suite 108  
Minnetonka, MN 55424



# CUSTOM RESISTOR SOLUTIONS

## Vishay Milwaukee

### Custom Power Resistors, Assemblies, and Load Banks

#### Resistors in Enclosures



Available in indoor or outdoor enclosures (IP00, IP20, or IP23), resistors can be pre-wired and assembled for power ratings between 300 W and 100 kW.

#### Resistors with Mounting Hardware



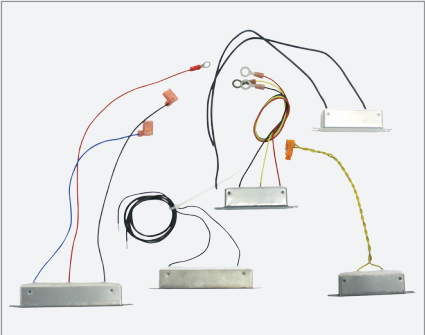
Many standard hardware options allow resistors to be purchased fully assembled, allowing easy integration into the final assembly.

#### Pre-Wired Resistor Assemblies



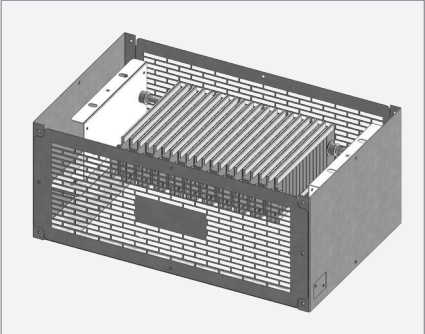
Assemblies are wired in parallel or in series to meet the needs of the application. Terminal blocks and thermal switches are also available.

#### Resistors with Leads



Value-add wiring and connectors allow for a “plug-and-play” solution that easily integrates into the final assembly.

#### Grid Resistor Assemblies



Custom grid resistor assemblies for dynamic braking and neutral grounding applications.

#### Special Resistors



Custom resistors are designed to order by our engineers and can be customized to fit unique electrical and mechanical constraints.

### Contact Us Directly



1-800-274-4284



[sales@chtechnology.com](mailto:sales@chtechnology.com)



6121 Baker Rd. Suite 108  
Minnetonka, MN 55424



# CUSTOM RESISTOR SOLUTIONS

Vishay Milwaukee

## Custom Resistors

**CS61**



Custom RB Series Resistors  
Datasheet:  
[www.vishay.com/doc?31856](http://www.vishay.com/doc?31856)

**CS62**



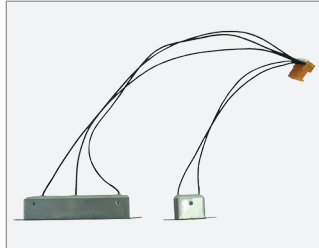
Custom RD Series Resistors  
Datasheet:  
[www.vishay.com/doc?31857](http://www.vishay.com/doc?31857)

**CS63**



Custom EDG Series Resistors  
Datasheet:  
[www.vishay.com/doc?31858](http://www.vishay.com/doc?31858)

**CS65**



Custom MCR Series Resistors  
Datasheet:  
[www.vishay.com/doc?31859](http://www.vishay.com/doc?31859)

**CS66**



Custom OV Series Resistors  
Datasheet:  
[www.vishay.com/doc?31860](http://www.vishay.com/doc?31860)

**CS71**



Custom Water Cooled Resistors  
Datasheet:  
[www.vishay.com/doc?31872](http://www.vishay.com/doc?31872)

**CSPR**



Custom Resistor Assemblies  
Datasheet:  
[www.vishay.com/doc?31861](http://www.vishay.com/doc?31861)

**CSFR**



Custom Resistors on Frames  
Datasheet:  
[www.vishay.com/doc?31862](http://www.vishay.com/doc?31862)

### Some customer special design options include

- **Electrical:** Tolerance, wattage, resistance, dielectric withstanding voltage, surge ability, and temperature coefficient
- **Mechanical:** Overall dimensions, mounting type, mounting configuration, and insulation
- **Connection:** Wire leads, connectors, terminal type, size, set-in, and material

## Contact Us Directly



1-800-274-4284



[sales@chtechnology.com](mailto:sales@chtechnology.com)



6121 Baker Rd. Suite 108  
Minnetonka, MN 55424



# CUSTOM RESISTOR SOLUTIONS

## Vishay Milwaukee

### LOCATIONS

#### CORPORATE HEADQUARTERS

UNITED STATES  
MALVERN, PA

#### PRODUCT DESIGN AND MANUFACTURING

UNITED STATES  
MILWAUKEE, WI

#### DISTRIBUTION HEADQUARTERS

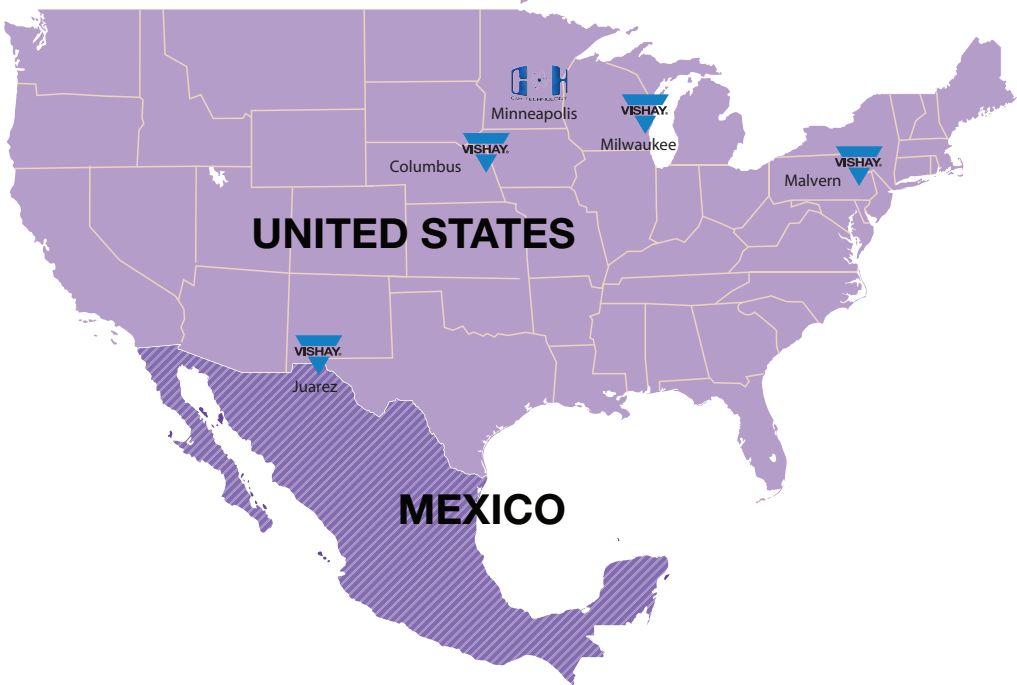
UNITED STATES  
MINNEAPOLIS, MN

#### DIVISIONAL HEADQUARTERS

UNITED STATES  
COLUMBUS, NE

#### MANUFACTURING

MEXICO  
JUAREZ



### Contact Us Directly



1-800-274-4284



[sales@chtechnology.com](mailto:sales@chtechnology.com)



6121 Baker Rd. Suite 108  
Minnetonka, MN 55424